



**PERISKAL**  
GROUP

Leading RIS technology.

# Onboard RIS applications

Marc Persoons

Periskal group

Belgium / Serbia / Rumania / Ukraine

# Standards



**PERISKAL**  
GROUP

Leading RIS technology.

- Inland ECDIS
- Notice to Skipper
- Electronic Reporting
- Tracking and Tracing

# Inland ECDIS



**PERISKAL**  
GROUP

Leading RIS technology.

- Inland ECDIS onboard is widespread all over Europe.
- Only by our company about 3600 professional inland vessels were equipped.
- Mainly information modus but the amount of Navigation modus is growing rapidly
- Current version 2.0 is used on all ships

# Information Modus



**PERISKAL**  
GROUP

Leading RIS technology.

**TRESCO INLAND ECDIS Viewer 8.4.5 Binnenvaart versie PERISKAL** Schaal 1:45000 Orientatie: 0.0°

Kaart Scherm Navigatie logboek Routeplanning Aantekeningen NTS AIS Consumption Instelling Help

Scherm Navigatie Routeplanning Aantekeningen Symbolen Simulatie Ais Reis

Plan Monitor

Schaal

8:00:22

0

GLLWs

Koers / Snelheid

SOG: \*\*\*\*\*

COG: \*\*\*\*\*

Consumption

E1 0.00

E2 0.00

Tot. current: 0.00 L/H

Cursor

Lat: 44° 00.042' N

Lon: 21° 00.001' E

Dist: 9.213 km

Hea: 65'

ETA: 27-02-08 08:45

Meten

Van: 108'

Afstand: 44.586 km

Waypoints

GPS Info

Info

Km **1117**

17/12/2007 73 Smederevo Haten VHF 18 NIF Smederevo VHF

Start EurIS viewer v3.0.1 pas.txt - Kladblok Eudora - [In] D/YMO Label Automatische upd... FrontRange GoldM... Tresco INLAND E... C:\Documents and... 8:00

# Navigation modus



**PERISKAL**  
GROUP

Leading RIS technology.

-90 °/min  
Tune : \_\_\_\_\_

KM. : .....  
VRM: 0.577 Km  
EBL: 299.4 °

SOG: 0.2 Km  
COG: 323.4°  
HEA: 141.4°  
ROT: -0.4°

Chart Logbook Routeplanning remarks NIS AIS

Screen Layout Ais Route remarks Symbols Voyage

Navigation Information

**GPS info**

Heading: -0.4

Lat : 51° 42.45' N  
Lon : 4° 51.74' E  
SOG : 0.2 Km/h  
COG : 323.4°

**Cursor**

**Ship**

**Info Left**

**AIS Chart**

5000 m

**11:30:14**  
13-10-2008

GPS 1  
**DGPS1**

**Pegel**

\*\*\*\*\*  
0 GLL'

**Info Right**

**Pathpilot**

Distance 0.000 Km  
Cmd Course 0.0°  
X-track Error \*\*\*\*\*  
X-track Direction → ←  
Mode Manual  
Connection:onnected  
Status OK

**AIS Details**

Name: MARIPOSA  
Callsign: 9244064  
Mmsi: 244620284  
Imo: 0  
Lat: 51.39.968 N  
Lon: 004.51.083 E  
Heading: 0.0  
Speed: 0.00 km

**Info**

**Waypoints**

**Meteo**

**Depth**

DPT : 2.50  
Ref : 0.00  
DPT 2 : \*\*\*\*\*

**Trip**

Dist.: 0.00 Km  
Time: 0  
Av.: 0.00 Km/h

Navigation

Range : 500 M  
Rings : 100 M

RADAR | CHART | CTR

Std All Usr

ROT GPS RADAR HEA

STC FTC Gain Brilliance \*\*\*\*\* 0 GLLWs

STOP PERISKAL RADAROVERLAY EXTRA

Safety : 25dm



# Notice to skipper

- Build in all versions
- Displayed in the map, in list and used in the advanced routeplanning function
- Authorities all over Europe are working on improved NTS service
- Solution to the “language barrier” on European waterways

# Information on the map



**PERISKAL**  
GROUP

Leading RIS technology.

The screenshot displays the TRESKO INLAND ECDIS Viewer software interface. The main window shows a map of a river with various navigational markers and depth soundings. A 'Management Message RIS' window is open, displaying the following information:

**Fairway**

Sender of the message : BMVT  
Country where message is valid : AT  
District/region within country:

Target group code :  
Subject : Partial obstruction  
Period of validity : 12-06-2006 - 14-06-2006  
Name of Geo object : Donau  
Kind of limitation : Abwinden  
Kind of limitation period : 12-06-2006 - 07:00 - 14-06-2006 - 17:00  
Communication channel info section :

Contents :  
Notice source (authority) : Schleusenaufsicht Abwinden

The software interface includes a menu bar (Chart, Screen, Navigation, Logbook, Routeplanning, remarks, NTS, AIS, Message, Settings, Help) and a toolbar with various navigation and display tools. The status bar at the bottom shows the date 30/4/2006 and the Windows taskbar with several open applications.

# Routeplanning



**PERISKAL**  
GROUP

Leading RIS technology.

TRESCO INLAND ECDIS Viewer 8.4.7 Binnenvaart versie PERISKAL Schaal 1:11250 Oriëntatie : 0.0°

Kaart Scherm Navigatie logboek Routeplanning Aantekeningen NIS AIS ISRS Consumption Instelling Help

Plan Monitor [Icons] Scherm Navigatie Routeplanning Aantekeningen Symbolen Simulatie Ais Reis

Schaal [Icons]

Duisburg-Dellviertel 11:58:29

1.8 deg. 15.0 kts

Rheinbruecke Duisburg-Rheinhausen(CA)  
Rheinbruecke Duisburg-Rheinhausen(CA)  
Rheinbruecke Duisburg-Rheinhausen(CA)  
Rheinbruecke Duisburg-Rheinhausen(CA)

Duisburg-Rheinhausen

Eisenbahnbrücke  
Eisenbahnbrücke Duisburg-Hochfeld  
Eisenbahnbrücke Duisburg-Hochfeld(CA) (H:9.1)

ISRS

ROTTERDAM	km: 0.0	ETA: 11:57
Slikkerveer, Seastores	km: 1.0	ETA: 12:00
Slikkerveer, Ten Donck, ligplaats	km: 1.3	ETA: 12:01
Krimpen aan den IJssel, veersteiger Fast	km: 1.8	ETA: 12:03
Schraan Bolnes bv	km: 2.2	ETA: 12:04
Ja	km: 2.3	ETA: 12:04
Binnenvaart Bedrijvenpark	km: 2.4	ETA: 12:05
Nieuwe Maas - Noord	km: 2.4	ETA: 12:05
Noord-Nieuwe Maas	km: 3.0	ETA: 12:07
Noord-Nieuwe Maas	km: 3.0	ETA: 12:07
GRENS NL - DE	km: 735.1	ETA: 03:39
ISRS : NLL0B00101JUNCT08576	Lengte: 0.0	Breedte: 0.0
	Hoogte: 0.0	VHF:
	TEL:	
GRENS DE - NL	km: 735.1	ETA: 03:39
Rheinbruecke Kleve-Emmerich	km: 739.5	ETA: 03:53
Industrieafen Emmerich	km: 740.1	ETA: 03:55
Strassenbruecke Rees-Kalkar	km: 754.0	ETA: 04:40
Strassenbruecke Wesel-Büderich	km: 778.9	ETA: 06:00
Nordhafen Walsum	km: 799.7	ETA: 07:08
Südhafen Walsum	km: 801.7	ETA: 07:14
Hafen Schvelgen	km: 802.5	ETA: 07:17
Rheinbruecke Emscherschnellweg	km: 807.5	ETA: 07:33
Eisenbahnbruecke Duisburg-Baerl	km: 807.6	ETA: 07:33
Hafen Rheinpreussen	km: 811.5	ETA: 07:46
Friedrich-Ebert-Brücke	km: 812.0	ETA: 07:48
Rheinbruecke Duisburg-Neuenkamp	km: 814.4	ETA: 07:55
Parallelhafen	km: 815.6	ETA: 07:59
Rheinbruecke Duisburg-Rheinhausen	km: 817.4	ETA: 08:05
ISRS : DERNH03900BRDG107753	Lengte: 0.0	Breedte: 0.0
	Hoogte: 9.1	VHF:
	TEL:	

Cursor

Lat: 51° 25.526' N  
Lon: 6° 44.212' E  
Dist:  
Hea: 0.00°  
ETA:

Meten  
Waypoints

4/04/2008



# Hydro Meteo



**PERISKAL**  
GROUP

Leading RIS technology.

- On line waterlevel information, currently used in Holland – Hymedis system
- GRIB file overlays, widely used on SOLAS vessels
- Water level prediction models

# Hymedis



**PERISKAL**  
GROUP

Leading RIS technology.

TRESCO INLAND ECDIS Viewer 8.4.7 Dredging version PERISKAL Scale 1:22500 Orientation: 0.0°

Chart Screen Navigation Logbook Routeplanning remarks Buoyage NTS AIS Hymedis ISRS ERINOT Bagger Settings Help

Plan Monitor Std User All Screen Navigation Routeplanning remarks Symbols Simulation Ais Voyage

**12:45:31**

Bath 542 ▲ 10/11/08 ▼ 12:43:00  
GLLWs

ISRS  
Windmeter  
GPS2  
GPS info

Lat: \*\*\*\*\*  
SOG: \*\*\*\*\*  
Lon: \*\*\*\*\*  
COG: \*\*\*\*\*  
HEA: 0.0°  
SPD: 0.0 kn  
Q-GPS1: INVALID

Depth  
Measure  
Excentric Points  
Waypoints  
Info  
Cursor

Lat: 51° 24.427' N  
Lon: 4° 12.065' E  
Dist:  
Hea: 0.00°  
ETA:

Trip

**Inbox**

2008-11-10 11:18:47  
meteo  
Vlissingen

VLISSINGEN (0-12 uur vooruit)  
WEERSVERWACHTING GELDIG VANAF 1300/101108  
WIND : ZUIDWEST 5-6 TOENEMEND 7-8, LATER AFNEMEND WEST 5-6 (1)  
ZICHT : GOED, IN NEERSLAG MATIG  
STOTEN: GEEN

Close

26/08/2008

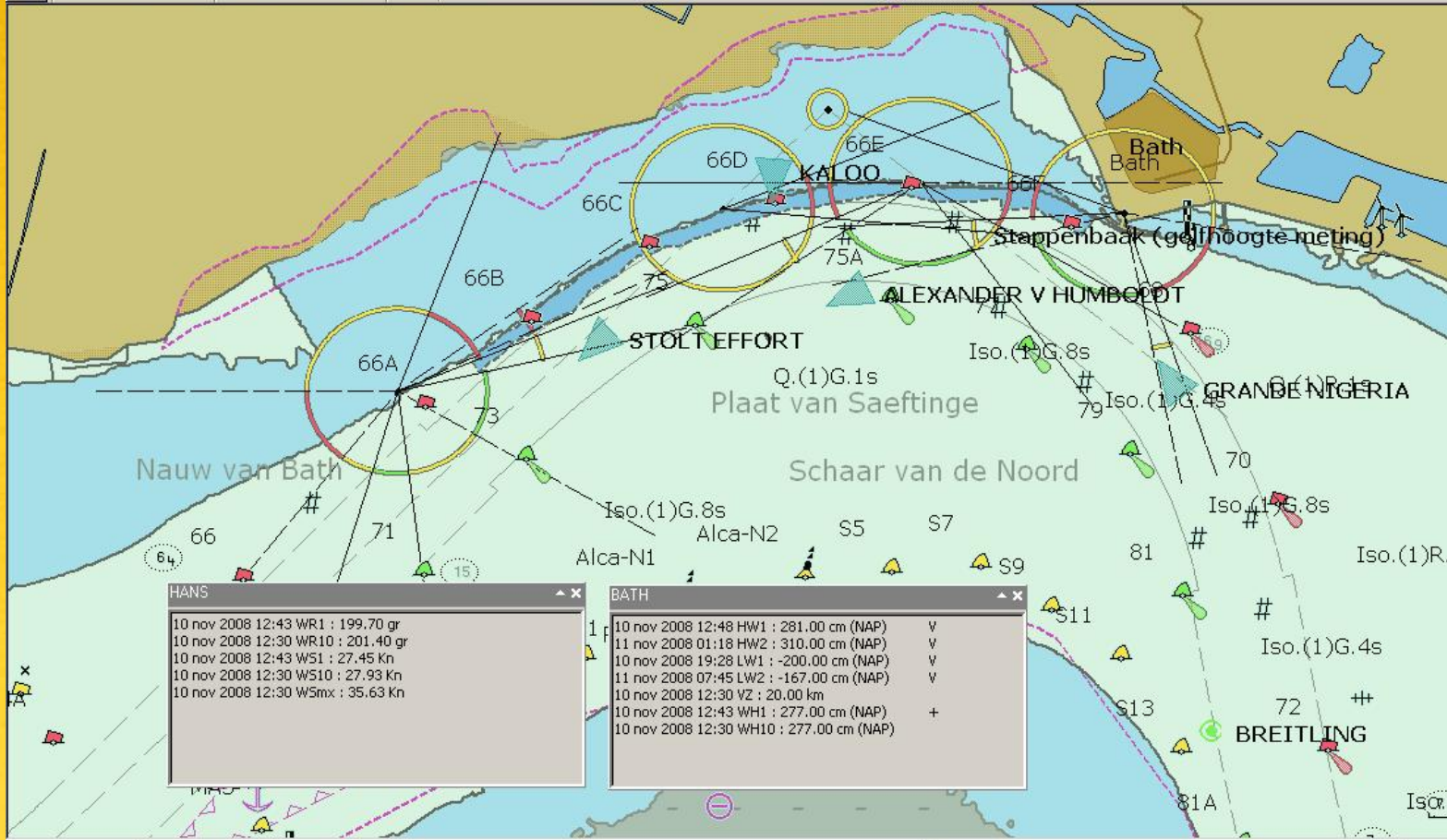


TRESCO INLAND ECDIS Viewer 8.4.7 Dredging version PERISKAL Scale 1:22500 Orientation: 0.0°

Chart Screen Navigation Logbook Routeplanning remarks Buoyage NTS AIS Hymedis ISRS ERINOT Bagger Settings Help

Plan Monitor [Icons] Screen Navigation Routeplanning remarks Symbols Simulation Ais Voyage

Scale [Icons]



12:47:34

Bath 542 ▲ 10/11/08 ▼ 12:43:00

GLLWs

ISRS ▼ ▲

Windmeter ▼

GPS2 ▼

GPS info ▲

Lat: \*\*\*\*\*

SOG: \*\*\*\*\*

Lon: \*\*\*\*\*

COG: \*\*\*\*\*

HEA: 0.0°

SPD: 0.0 kn

Q-GPS1: INVALID

Depth ▼

Measure ▼

Excentric Points ▼

Waypoints ▼

Info ▼

Cursor ▲

Lat: 51° 23.541' N

Lon: 4° 12.936' E

Dist:

Hea: 0.00°

ETA:

Trip ▼ ▲

HANS	
10 nov 2008 12:43 WR1 :	199.70 gr
10 nov 2008 12:30 WR10 :	201.40 gr
10 nov 2008 12:43 WS1 :	27.45 Kn
10 nov 2008 12:30 WS10 :	27.93 Kn
10 nov 2008 12:30 W5mx :	35.63 Kn

BATH		
10 nov 2008 12:48 HW1 :	281.00 cm (NAP)	V
11 nov 2008 01:18 HW2 :	310.00 cm (NAP)	V
10 nov 2008 19:28 LW1 :	-200.00 cm (NAP)	V
11 nov 2008 07:45 LW2 :	-167.00 cm (NAP)	V
10 nov 2008 12:30 VZ :	20.00 km	
10 nov 2008 12:43 WH1 :	277.00 cm (NAP)	+
10 nov 2008 12:30 WH10 :	277.00 cm (NAP)	

26/08/2008

# Electronic Reporting



**PERISKAL**  
GROUP

Leading RIS technology.

- Integrated Electronic Reporting for single cargo
- Compatibility with BICS / Eri tables
- Integrated solution based on ISRS codes
- Vital part in the 'Single Entry' process for the skipper onboard



TRESCO INLAND ECDIS Viewer PC-NAVIGIS 8.1.5 Береговой PERISKAL    Schaal 1:66358 Orientatie : 50.0°

карта экран навигация судовой журнал наметить маршрут замечания NTS AIS Humedis Сообщение Береговой установки помощь

план монитор [Std] [Ovr] [All] экран навигация наметить маршрут замечания символы моделирование AIS

просмотр масштаб [Zoom In] [Zoom Out] [Reset] [Home] [Info] [Help]

10:04:43

0

hostname meteo.ris-euro

Waypoints

GPS Info

Lat: \*\*\*\*\*

Lon: \*\*\*\*\*

SOG: \*\*\*\*\*

COG: \*\*\*\*\*

SPD: \*\*\*\*\*

курс/скорость

SOG: \*\*\*\*\*

COG: \*\*\*\*\*

измерить

Циркуль

Индикатор мыши

расстояние 4621.02 km

от (из) 191°

Info

km

рейс

[Play] [Stop] [Pause]

расстояние

23/12/2005

ERI сообщение

редактировать    удалить    Сохранить    отмена    Экспорт    Эксперт

рейс | судно | Груз

Источник

Страна: BELGIUM

место (п): ANTWERP

Терминал: MEXICO NATIE KADE 009

дата отправления: 1/12/2004    отправления: 00:00

Пункт назначения

Страна: BULGARIA

место (п): RUSE

Терминал

дата прибытия: 3/03/2006    отправления: 11:20

Люди: 150

закреть

# Tracking and Tracing



**PERISKAL**  
GROUP

Leading RIS technology.

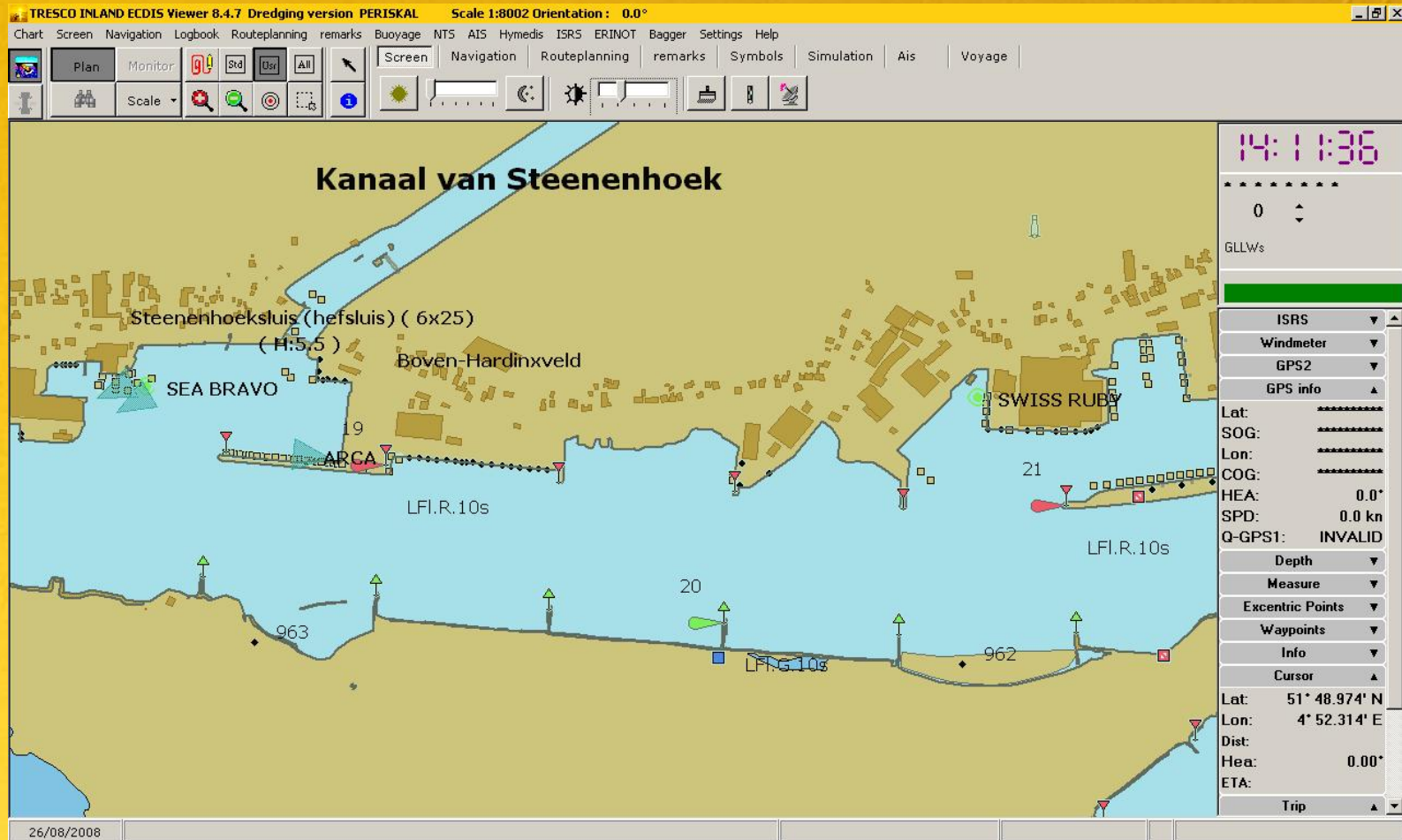
- Inland ECDIS implemented
- Visualisation
- Control of Inland AIS transponder
- Shore based web application

# AIS in Information Mode



**PERISKAL**  
GROUP

Leading RIS technology.



# AIS in Navigation mode



**PERISKAL**  
GROUP

Leading RIS technology.

The screenshot displays a navigation software interface with a radar overlay on the left and various data panels on the right.

**Top Status:** -90 °/min Tune: ..... +90 °/min. SOG: 0.2 Km COG: 323.4° HEA: 141.4° ROT: -0.4°

**Left Panel (Radar/Chart):** KM: : ..... VRM: 0.577 Km EBL: 299.4°

**Right Panel (Navigation Information):**

- GPS info:**
  - Heading: -0.4
  - Lat : 51° 42.45' N
  - Lon : 4° 51.74' E
  - SOG : 0.2 Km/h
  - COG : 323.4°
- AIS Chart:** 5000 m
- AIS Details:**
  - Name: MARIPOSA
  - Callsign: 9244064
  - Mmsi: 244620284
  - Imo: 0
  - Lat: 51.39.968 N
  - Lon: 004.51.083 E
  - Heading: 0.0
  - Speed: 0.00 km
- Pathpilot:**
  - Distance 0.0000 Km
  - Cmd Course 0.0°
  - X-track Error \*\*\*\*\*
  - X-track Direction ←→
  - Mode Manual
  - Connection:onnected
  - Status OK
- Trip:**
  - Dist.: 0.00 Km
  - Time: 0
  - Av.: 0.00 Km/h
- Info Right:**
  - 11:30:14
  - 13-10-2008
  - GPS 1
  - DGPS1**
  - Pegel: 0 GLL'
  - Info: Info
  - Waypoints: Waypoints
  - Meteo: Meteo
  - Depth: Depth
  - DPT : 2.50
  - Ref : 0.00
  - DPT 2 : \*\*\*\*\*

**Bottom Panel:** Navigation Range : 500 M Rings : 100 M RADAR CHART CTR Std All Usr ROT GPS RADAR HEA STOP PERISKAL RADAROVERLAY EXTRA Safety : 25dm

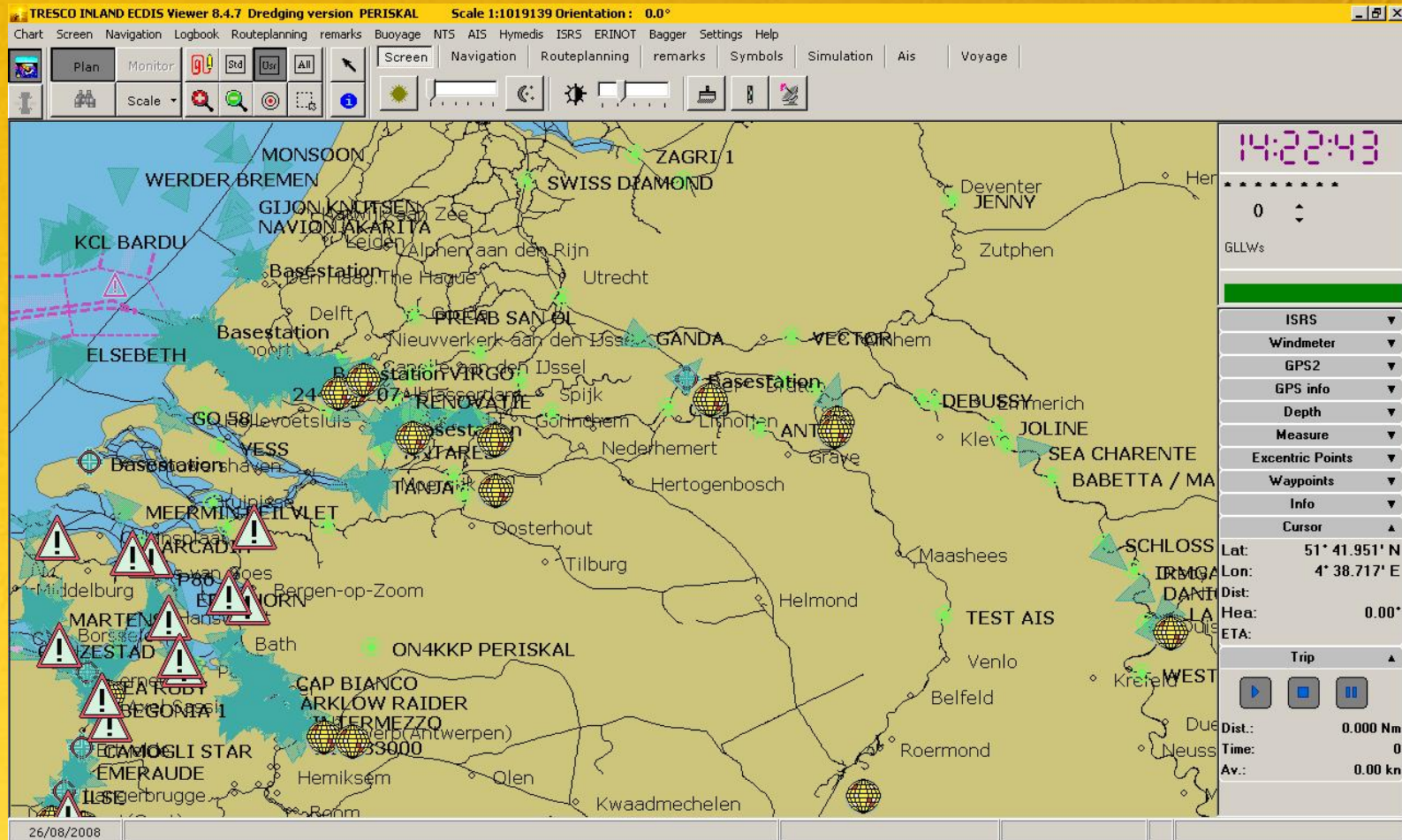


# Use of AIS



**PERISKAL**  
GROUP

Leading RIS technology.





**PERISKAL**  
**GROUP**

Leading RIS technology.

# Thanks !

Further information in Dutch, English,  
French, German, Rumanian and  
Russian Language  
[www.periskal.com](http://www.periskal.com)